

EXHIBIT A

NW 1/4, SECTION 11, TOWNSHIP 3 SOUTH, RANGE 66 WEST 6th P.M.
-----CITY OF AURORA, COUNTY OF ADAMS, STATE OF COLORADO-----

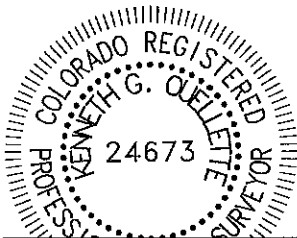
PROPERTY DESCRIPTION

TWO PARCELS OF LAND BEING A PORTION OF THE NORTHWEST QUARTER OF SECTION 11, TOWNSHIP 3 SOUTH, RANGE 66 WEST OF THE 6TH PRINCIPAL MERIDIAN, CITY OF AURORA, COUNTY OF ADAMS, STATE OF COLORADO AND BEING MORE PARTICULARLY DESCRIBED AS FOLLOWS:

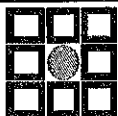
BEARINGS ARE ASSUMED AND ARE BASED ON THE NORTH LINE OF THE NORTHWEST QUARTER OF SECTION 11, TOWNSHIP 3 SOUTH, RANGE 66 WEST OF THE 6TH PRINCIPAL MERIDIAN AS BEARING S89°55'04"W BETWEEN THE NORTH QUARTER CORNER OF SAID SECTION 11 AND THE NORTHWEST CORNER OF SAID SECTION 11. BASED ON THE CITY OF AURORA HORIZONTAL CONTROL NETWORK, COLORADO STATE PLANE CENTRAL ZONE 1983/1992 HARN. THIS DESCRIPTION UTILIZED RECORDED DOCUMENTS FROM THE ADAMS COUNTY CLERK AND RECORDER'S OFFICE AND DOES NOT REPRESENT A MONUMENTED LAND SURVEY AND SHOULD NOT BE RELIED UPON AS SUCH.

PARCEL 1

COMMENCING AT SAID NORTH QUARTER CORNER OF SECTION 11;
THENCE S52°20'17"W A DISTANCE OF 1982.36 FEET TO THE **POINT OF BEGINNING**;
THENCE N00°29'13"W A DISTANCE OF 142.87 FEET;
THENCE N89°30'47"E A DISTANCE OF 139.63 FEET;
THENCE S00°29'13"E A DISTANCE OF 79.86 FEET;
THENCE N89°55'13"E A DISTANCE OF 222.01 FEET;
THENCE N00°29'13"W A DISTANCE OF 178.00 FEET;
THENCE N89°55'13"E A DISTANCE OF 7.50 FEET;
THENCE N00°29'13"W A DISTANCE OF 274.01 FEET;
THENCE N89°55'13"E A DISTANCE OF 420.52 FEET;
THENCE S00°29'13"E A DISTANCE OF 238.01 FEET;
THENCE S89°55'13"W A DISTANCE OF 4.00 FEET;
THENCE S00°29'13"E A DISTANCE OF 136.92 FEET;
THENCE N89°30'47"E A DISTANCE OF 58.00 FEET;
THENCE N00°29'13"W A DISTANCE OF 1.50 FEET;
THENCE N89°55'13"E A DISTANCE OF 43.56 FEET;
THENCE N00°04'47"W A DISTANCE OF 135.00 FEET;
THENCE N89°55'13"E NON-TANGENT WITH THE FOLLOWING DESCRIBED CURVE A DISTANCE OF 436.84 FEET;



KENNETH G. OUELLETTE, P.L.S. 24673
DATE: SEPTEMBER 6, 2023
JOB NO. 65419757
FOR AND ON BEHALF OF MERRICK & COMPANY



MERRICK

5970 Greenwood Plaza Blvd., Greenwood Village, CO 80111
Telephone: 303-751-0741

PAINTED PRAIRIE METROPOLITAN
DISTRICT NO. 10

DATE: 9/6/23

SHEET: 1 OF 4

EXHIBIT A

NW 1/4, SECTION 11, TOWNSHIP 3 SOUTH, RANGE 66 WEST 6th P.M.
-----CITY OF AURORA, COUNTY OF ADAMS, STATE OF COLORADO-----

PROPERTY DESCRIPTION

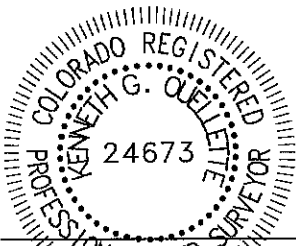
THENCE ALONG THE ARC OF A CURVE TO THE RIGHT, HAVING A CENTRAL ANGLE OF 22°14'20", A RADIUS OF 889.50 FEET, A CHORD BEARING S11°41'26"W A DISTANCE OF 343.09 FEET, AND AN ARC DISTANCE OF 345.25 FEET;
THENCE ALONG THE ARC OF A CURVE TO THE LEFT, HAVING A CENTRAL ANGLE OF 20°21'47", A RADIUS OF 980.50 FEET, A CHORD BEARING S12°37'42"W A DISTANCE OF 346.64 FEET, AND AN ARC DISTANCE OF 348.47 FEET;
THENCE ALONG THE ARC OF A CURVE TO THE LEFT, HAVING A CENTRAL ANGLE OF 92°47'42", A RADIUS OF 20.00 FEET, A CHORD BEARING N43°57'02"W A DISTANCE OF 28.97 FEET, AND AN ARC DISTANCE OF 32.39 FEET;
THENCE S89°39'07"W TANGENT WITH THE FOLLOWING DESCRIBED CURVE A DISTANCE OF 234.61 FEET;
THENCE ALONG THE ARC OF A CURVE TO THE RIGHT, HAVING A CENTRAL ANGLE OF 15°22'54", A RADIUS OF 2533.00 FEET, A CHORD BEARING N82°39'26"W A DISTANCE OF 677.97 FEET, AND AN ARC DISTANCE OF 680.01 FEET;
THENCE N74°57'59"W TANGENT WITH THE FOLLOWING DESCRIBED CURVE A DISTANCE OF 155.74 FEET;
THENCE ALONG THE ARC OF A CURVE TO THE RIGHT, HAVING A CENTRAL ANGLE OF 01°45'30", A RADIUS OF 533.00 FEET, A CHORD BEARING N74°05'13"W A DISTANCE OF 16.36 FEET, AND AN ARC DISTANCE OF 16.36 FEET;
THENCE N00°04'47"W A DISTANCE OF 243.55 FEET;
THENCE S89°55'13"W A DISTANCE OF 83.75 FEET TO THE **POINT OF BEGINNING**.

CONTAINING 17.708 ACRES, MORE OR LESS.

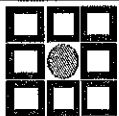
PARCEL 2

COMMENCING AT SAID NORTH QUARTER CORNER OF SECTION 11;
THENCE S59°28'45"W A DISTANCE OF 1837.64 FEET TO THE **POINT OF BEGINNING**;
THENCE N00°29'13"W A DISTANCE OF 238.01 FEET;
THENCE N89°55'13"E A DISTANCE OF 143.50 FEET;
THENCE S00°29'13"E A DISTANCE OF 238.01 FEET;
THENCE S89°55'13"W A DISTANCE OF 143.50 FEET TO THE **POINT OF BEGINNING**.

CONTAINING 0.784 ACRES, MORE OR LESS.



KENNETH G. OUELLETTE, P.L.S. 24673
DATE: SEPTEMBER 6, 2023
JOB NO. 65419757
FOR AND ON BEHALF OF MERRICK & COMPANY



MERRICK[®]

5970 Greenwood Plaza Blvd., Greenwood Village, CO 80111
Telephone: 303-751-0741

PAINTED PRAIRIE METROPOLITAN
DISTRICT NO. 10

DATE: 9/6/23

SHEET: 2 OF 4

ILLUSTRATION FOR EXHIBIT A

NW COR SEC 11
T3S, R66W, 6TH P.M.

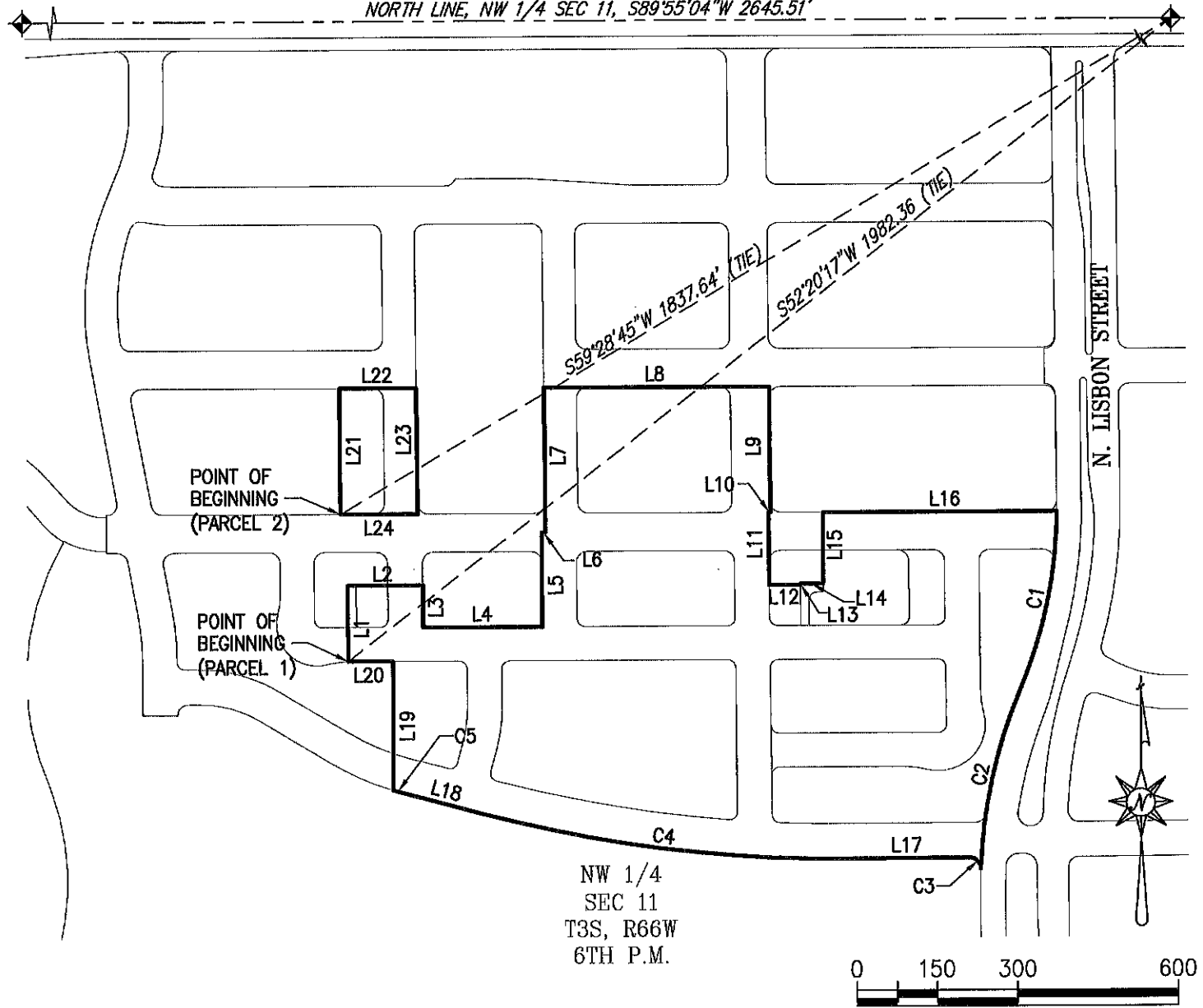
E. 64TH AVENUE

(PUBLIC ROW VARIES)

BASIS OF BEARINGS

NORTH LINE, NW 1/4 SEC 11, S89°55'04"W 2645.51'

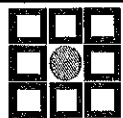
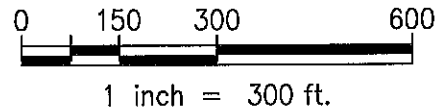
POINT OF COMMENCEMENT
N 1/4 CORNER SEC 11
T3S, R66W, 6TH P.M.



THE ABOVE DESCRIBED PARCEL 1 CONTAINS 17.708 ACRES MORE OR LESS.

THE ABOVE DESCRIBED PARCEL 2 CONTAINS 0.784 ACRES MORE OR LESS.

This illustration does not represent a monumented survey. It is intended only to depict the attached legal description.



MERRICK®

5970 Greenwood Plaza Blvd., Greenwood Village, CO 80111
Telephone: 303-751-0741

PAINTED PRAIRIE METROPOLITAN
DISTRICT NO. 10

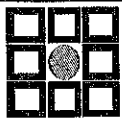
DATE: 9/6/23

SHEET: 3 OF 4

ILLUSTRATION FOR EXHIBIT A

LINE TABLE		
LINE #	BEARING	LENGTH
L1	N00°29'13"W	142.87'
L2	N89°30'47"E	139.63'
L3	S00°29'13"E	79.86'
L4	N89°55'13"E	222.01'
L5	N00°29'13"W	178.00'
L6	N89°55'13"E	7.50'
L7	N00°29'13"W	274.01'
L8	N89°55'13"E	420.52'
L9	S00°29'13"E	238.01'
L10	S89°55'13"W	4.00'
L11	S00°29'13"E	136.92'
L12	N89°30'47"E	58.00'
L13	N00°29'13"W	1.50'
L14	N89°55'13"E	43.56'
L15	N00°04'47"W	135.00'
L16	N89°55'13"E	436.84'
L17	S89°39'07"W	234.61'
L18	N74°57'59"W	155.74'
L19	N00°04'47"W	243.55'
L20	S89°55'13"W	83.75'
L21	N00°29'13"W	238.01'
L22	N89°55'13"E	143.50'
L23	S00°29'13"E	238.01'
L24	S89°55'13"W	143.50'

CURVE TABLE					
CURVE #	DELTA	RADIUS	CHORD BEARING	CHORD LENGTH	LENGTH
C1	22°14'20"	889.50'	S11°41'26"W	343.09'	345.25'
C2	20°21'47"	980.50'	S12°37'42"W	346.64'	348.47'
C3	92°47'42"	20.00'	N43°57'02"W	28.97'	32.39'
C4	15°22'54"	2533.00'	N82°39'26"W	677.97'	680.01'
C5	1°45'30"	533.00'	N74°05'13"W	16.36'	16.36'



MERRICK®

5970 Greenwood Plaza Blvd., Greenwood Village, CO 80111
Telephone: 303-751-0741

PAINTED PRAIRIE METROPOLITAN
DISTRICT NO. 10

DATE: 9/6/23

SHEET: 4 OF 4